

CREATE
YOUR STYLE with
CRYSTALLIZED™
- Swarovski Elements



DESIGN PROJECT

BROOCH
"LOVE"

BROOCH "LOVE"



CRYSTALLIZED™ – Swarovski Elements

Article	Product Group	Article No.	Amount	Size	Colour	Colour Code
	Round Stones	1201	1 pc.	35 mm	Crystal	001
	Beads	5000	2 pcs.	4 mm	Siam	208
	Beads	5328	2 pcs.	3 mm	Dark Red Coral	395
	Beads	5328	2 pcs.	4 mm	Ruby	501
	Crystal Pearls	5810	54 pcs.	3 mm	Crystal White Pearl	001 650
	Crystal Pearls	5810	234 pcs.	4 mm	Crystal White Pearl	001 650
	Pendants	6015	2 pcs.	21 mm	Mosaic White Opal	751
	Pendants	6202	1 pc.	18x17.5 mm	Siam	208

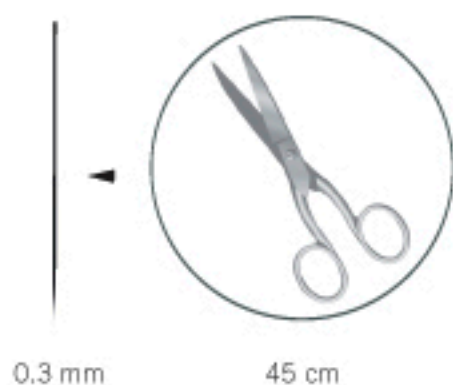
Supplies & Tools

- Supplies**
- 6x Jump ring, silver, 5
 - 2x Jump ring, silver, 6
 - 1x Jump ring, silver, 8
 - 2x Leather, white, 7x7 cm
 - 1m Nylon thread, transparent, 0,25
 - 4m Nylon thread, transparent, 0,3
 - 1.2 m Nylon thread, transparent, 0,4
 - 1 Pin, silver, 27
- Tools**
- Flatnose pliers
 - Leather glue
 - Scissors
 - Sheet of paper, A4
 - Sticky tape

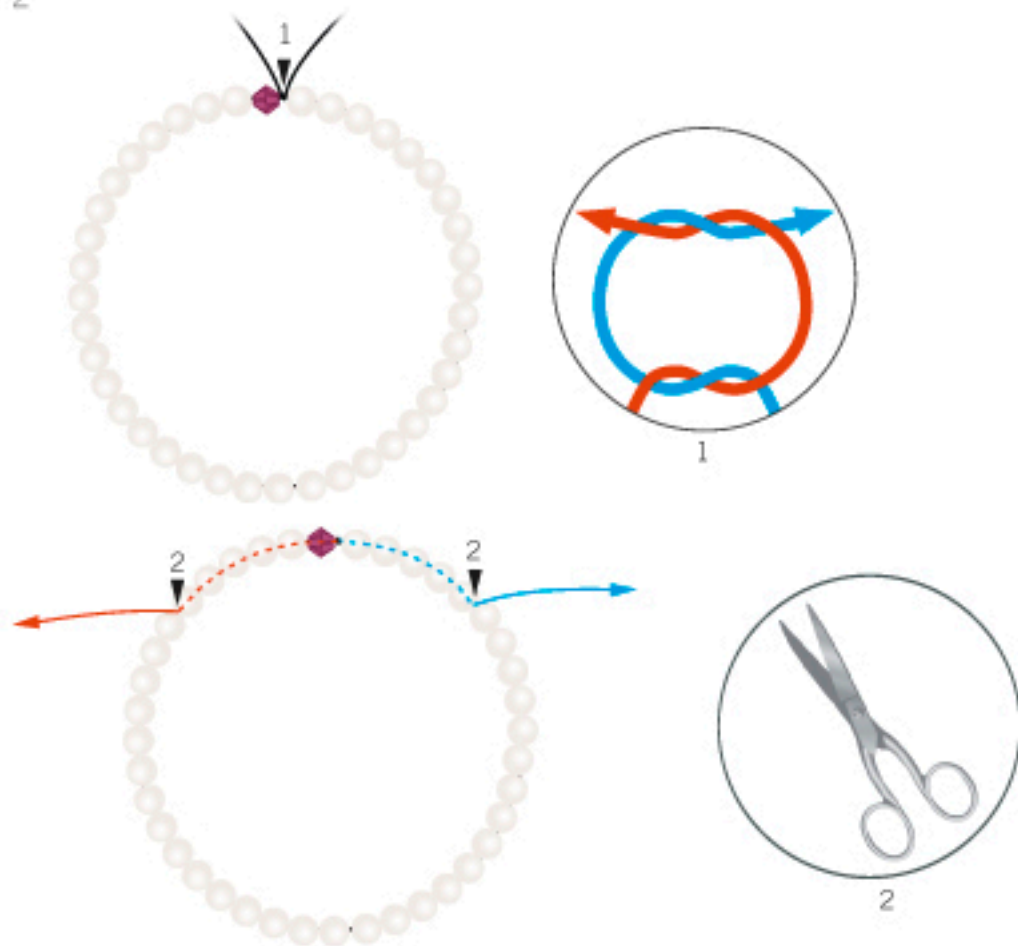
Level of design: **ADVANCED**

Have also a look at the **text instruction** at the last page!

STEP 1



STEP 2



STEP 3



STEP 4

Repeat step 3:



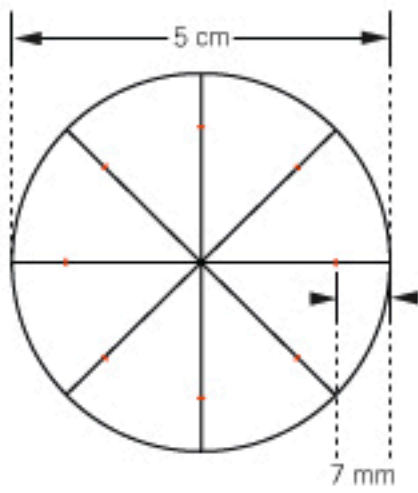
STEP 5

Repeat steps 2 - 4 x1

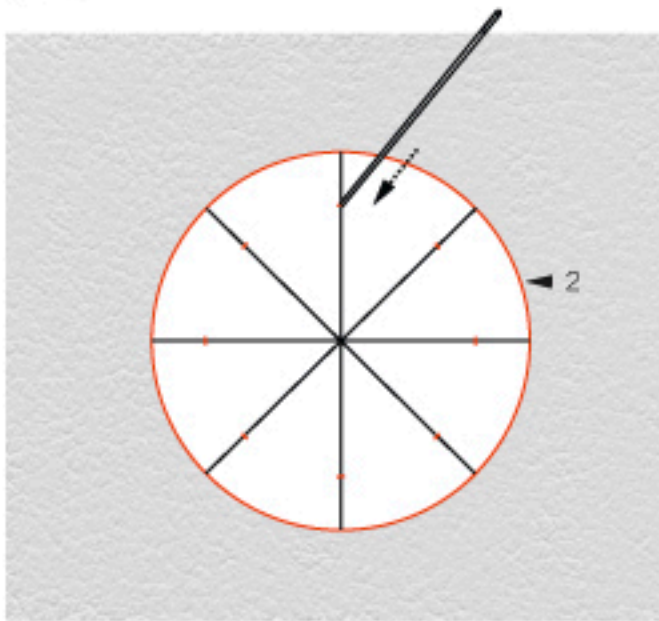


STEP 6

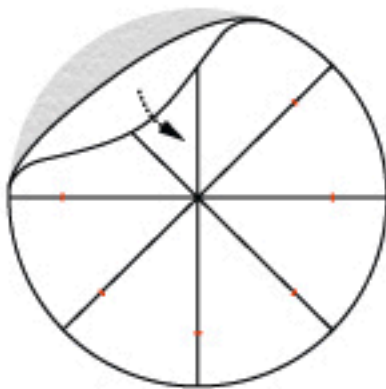




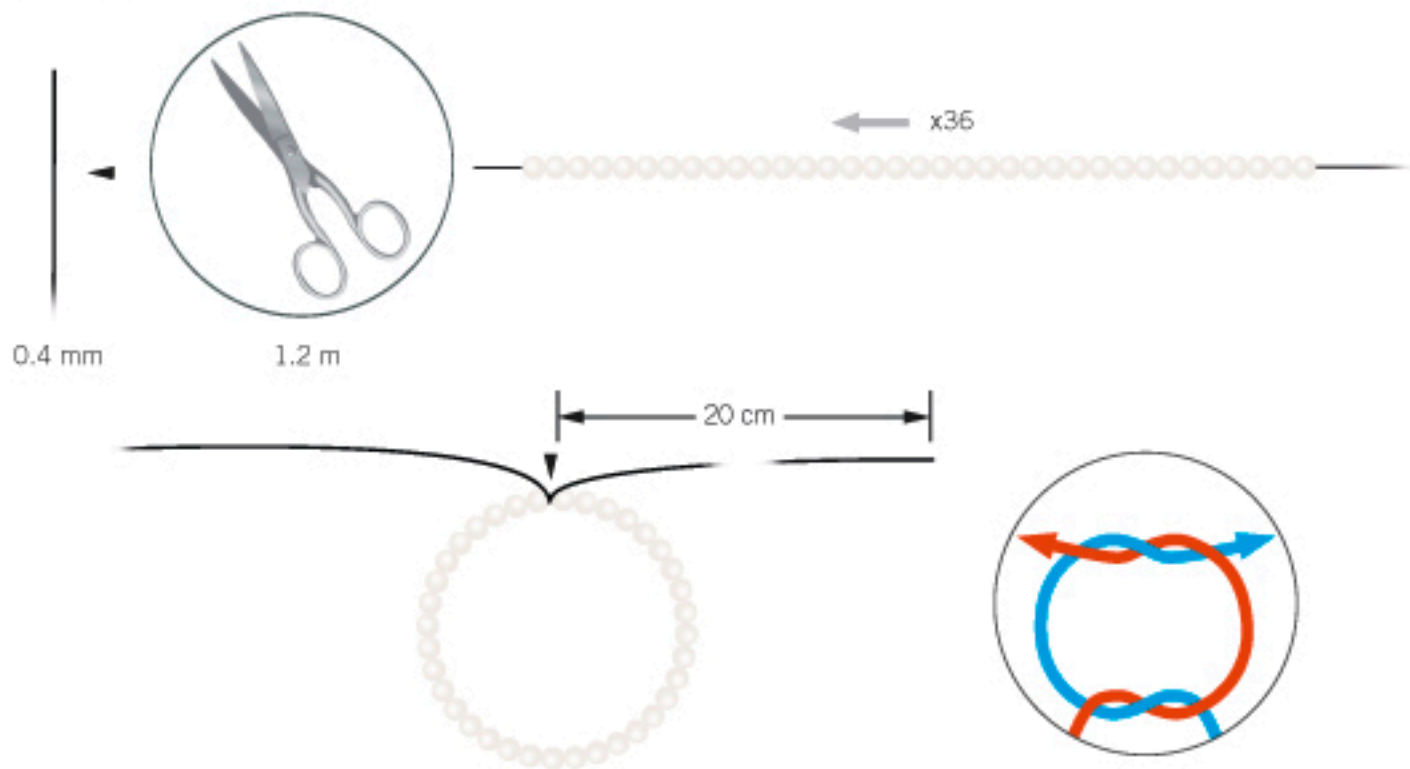
STEP 7



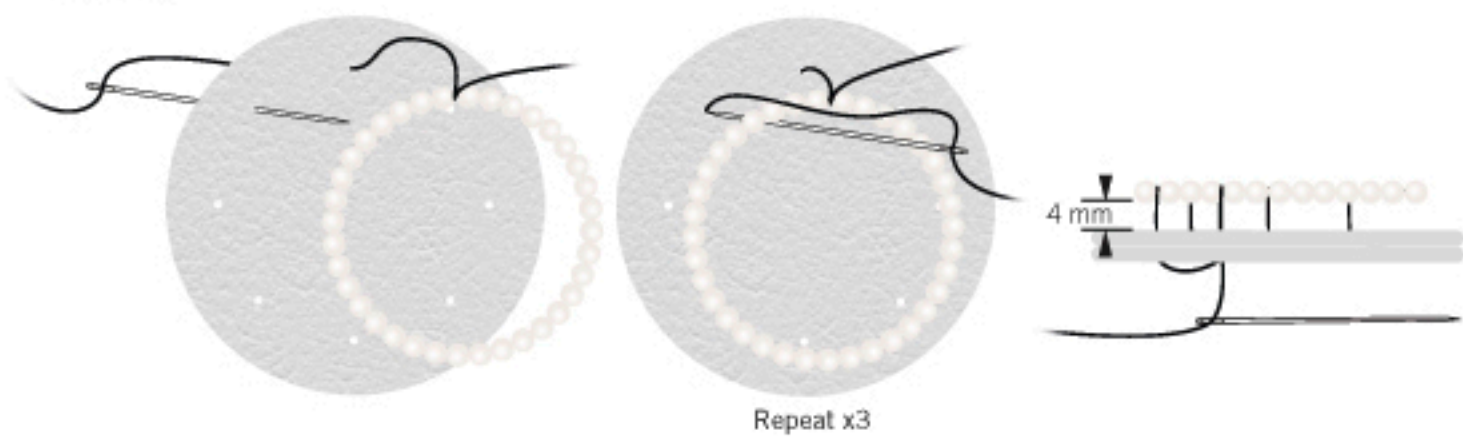
Repeat x7



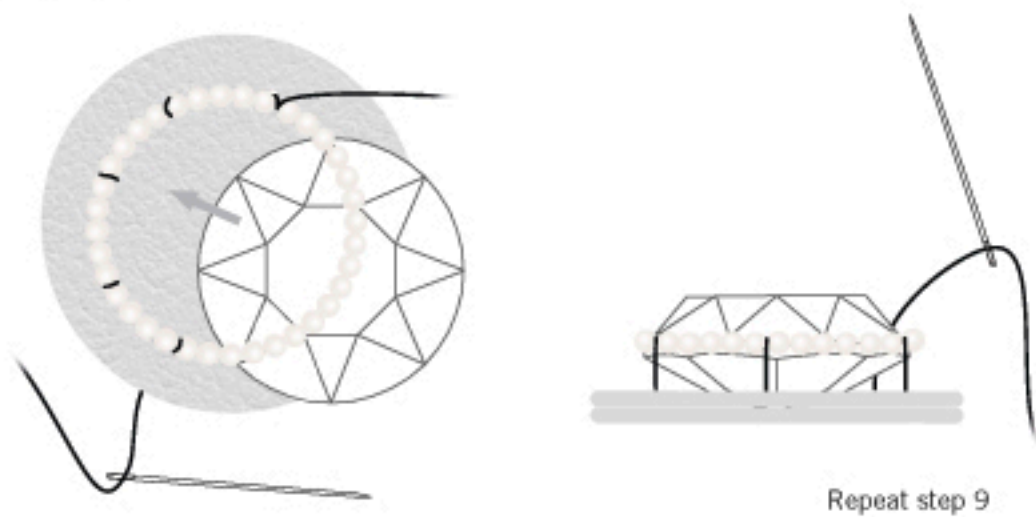
STEP 8

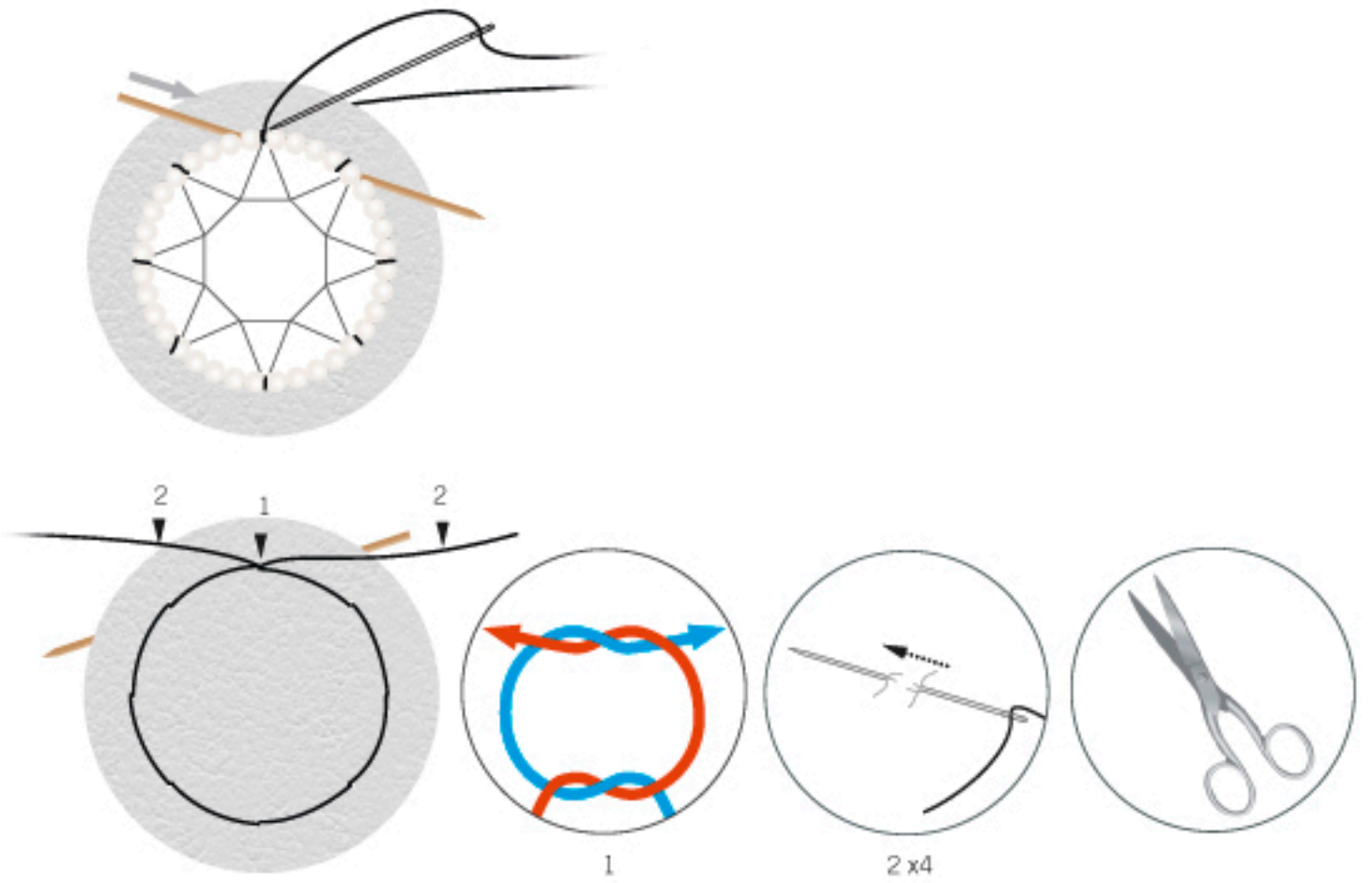


STEP 9

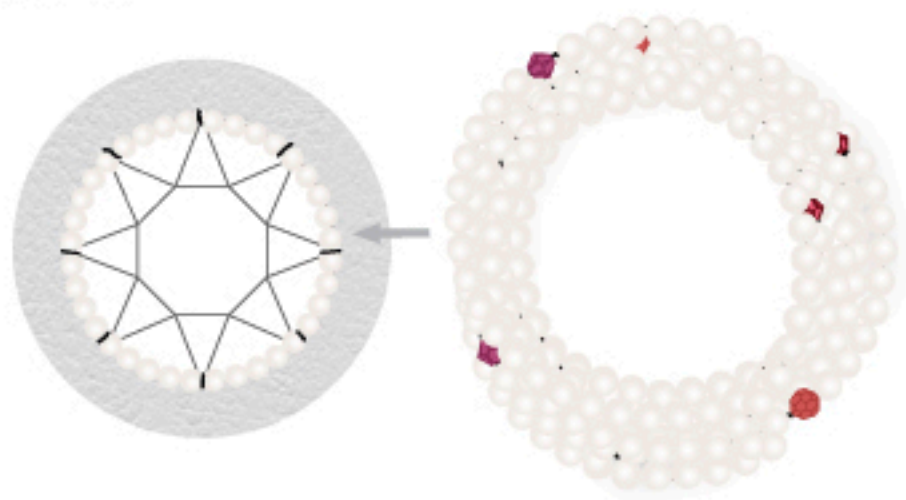


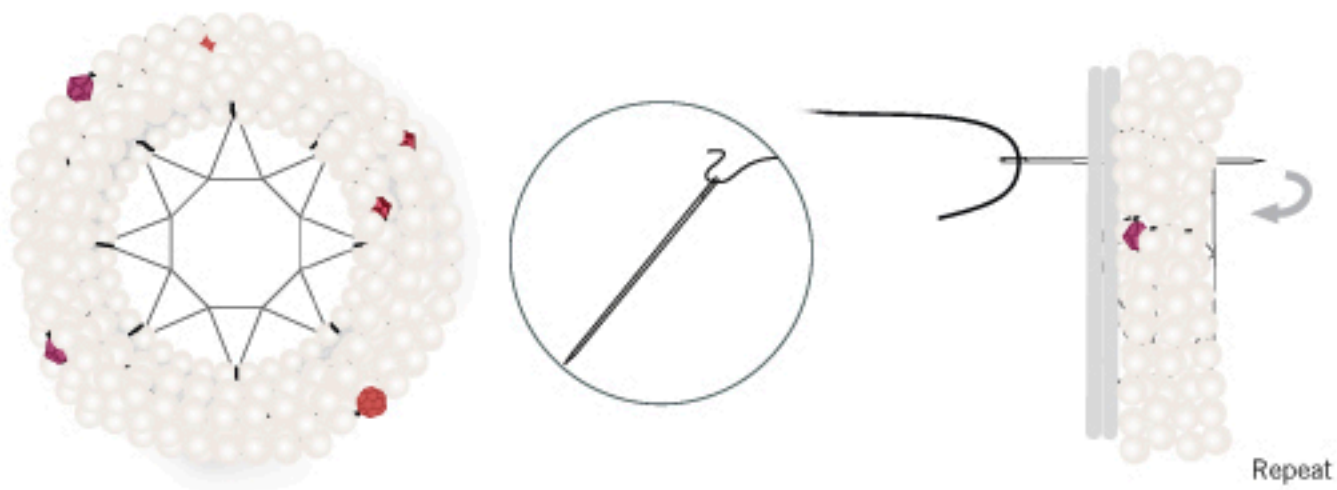
STEP 10



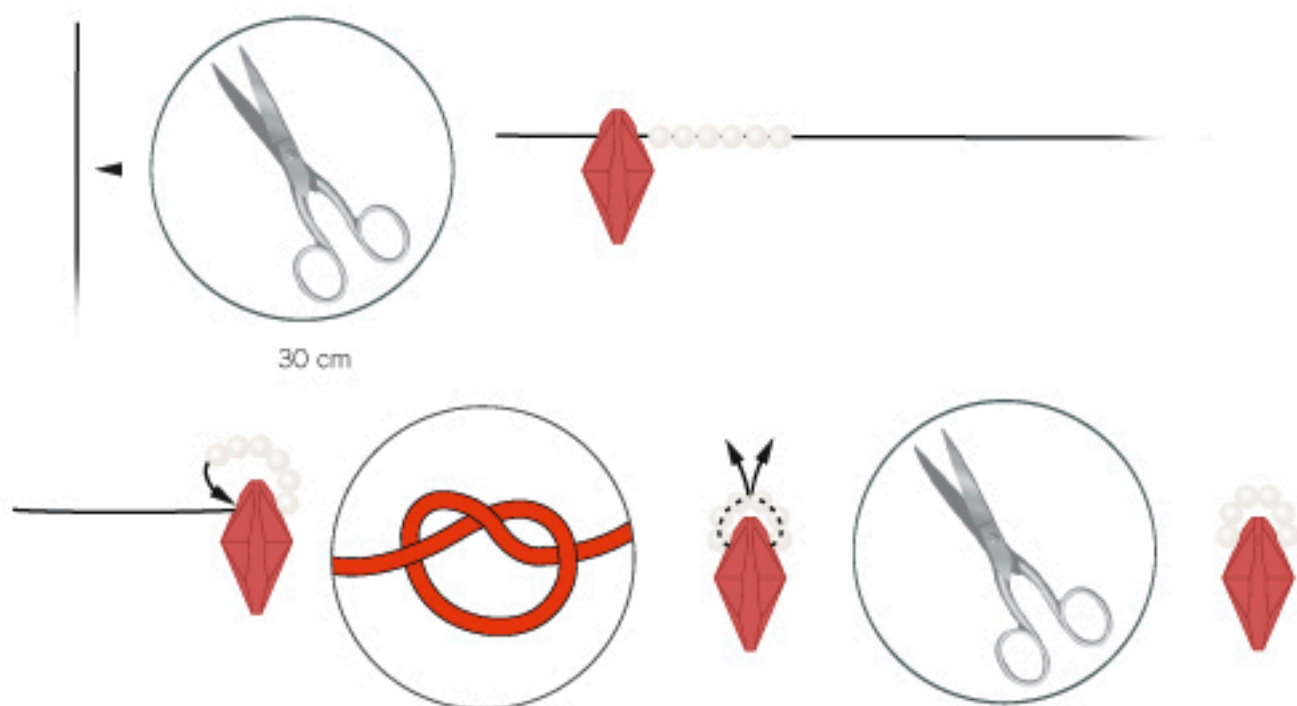


STEP 11

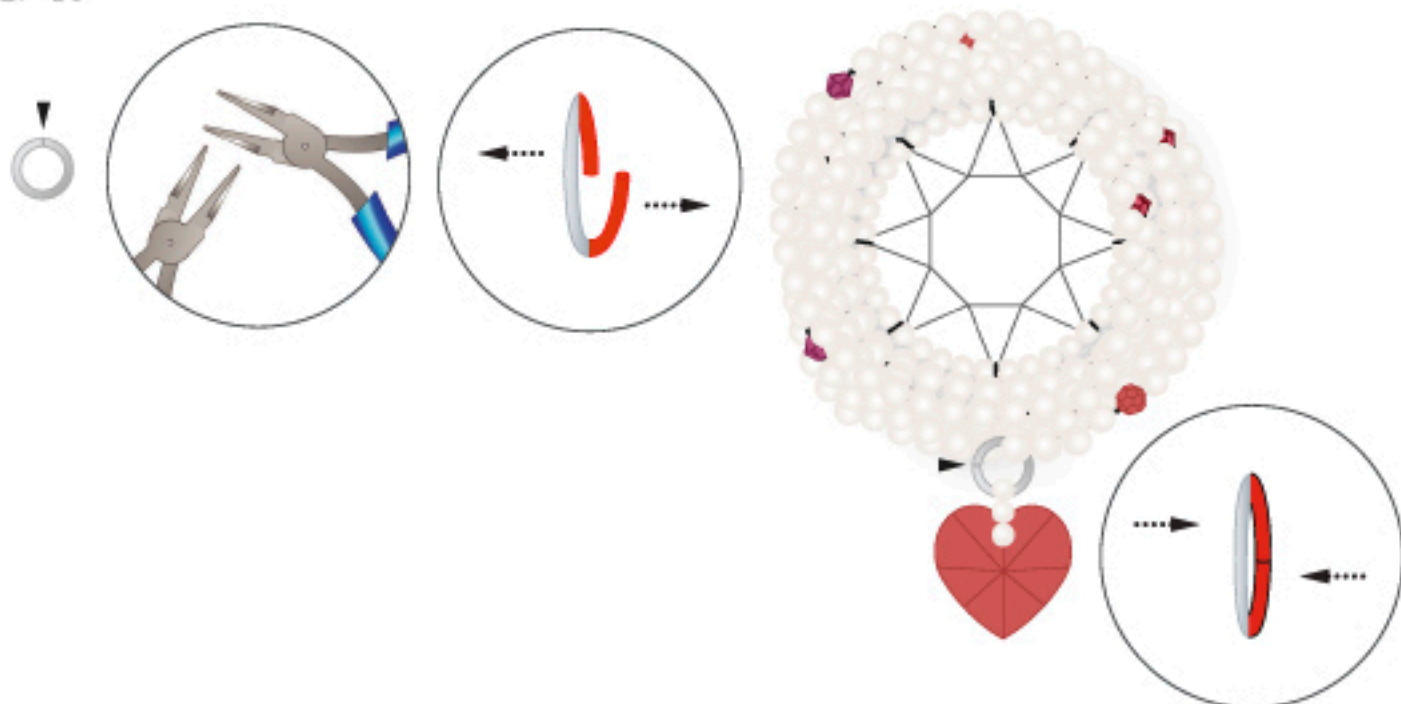




STEP 12

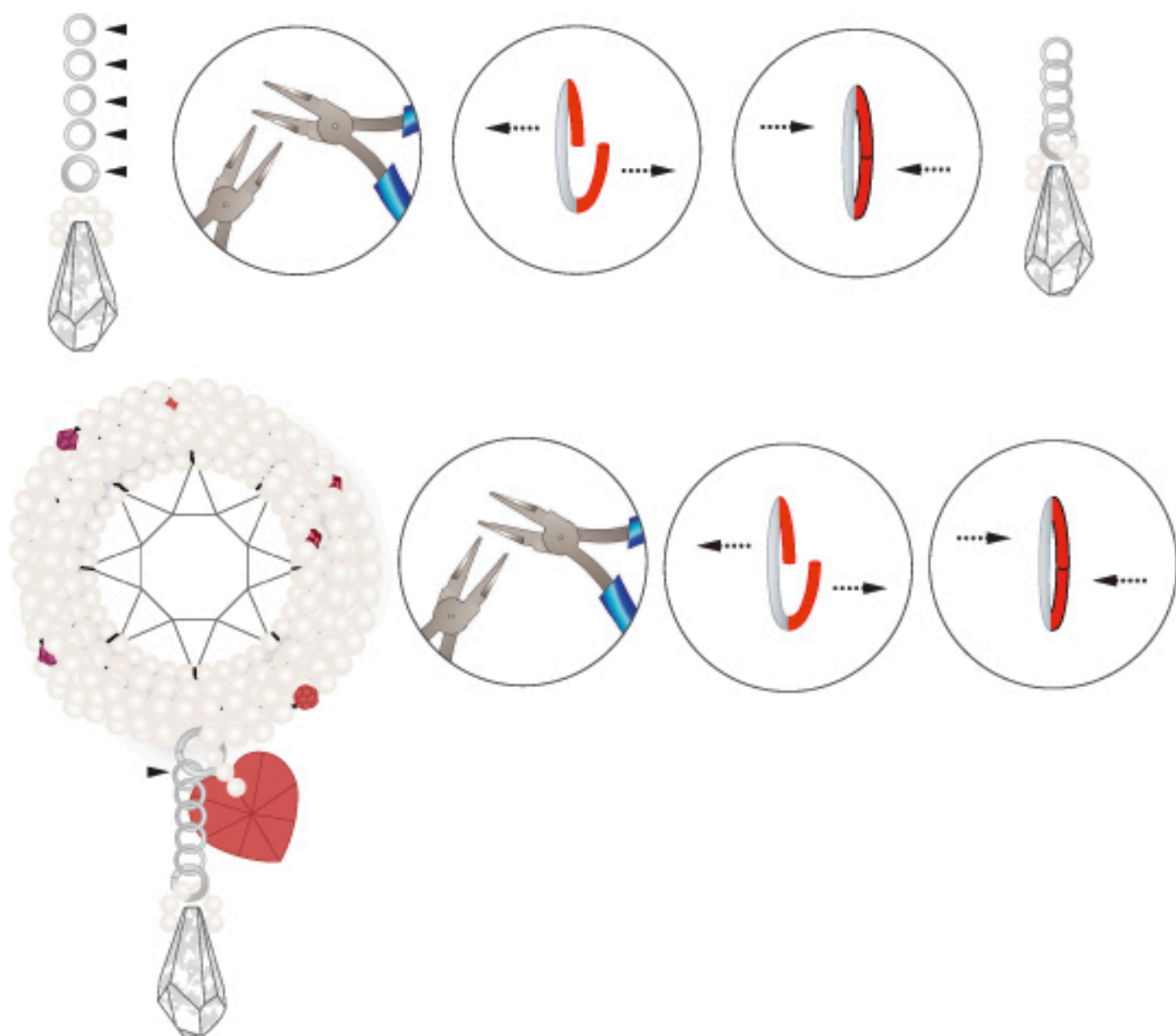


STEP 13



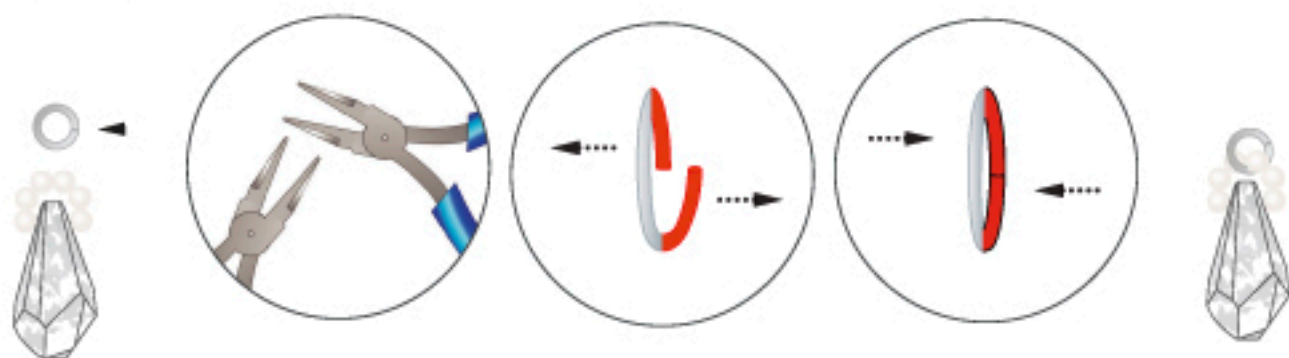
STEP 14

Repeat step 12 x1

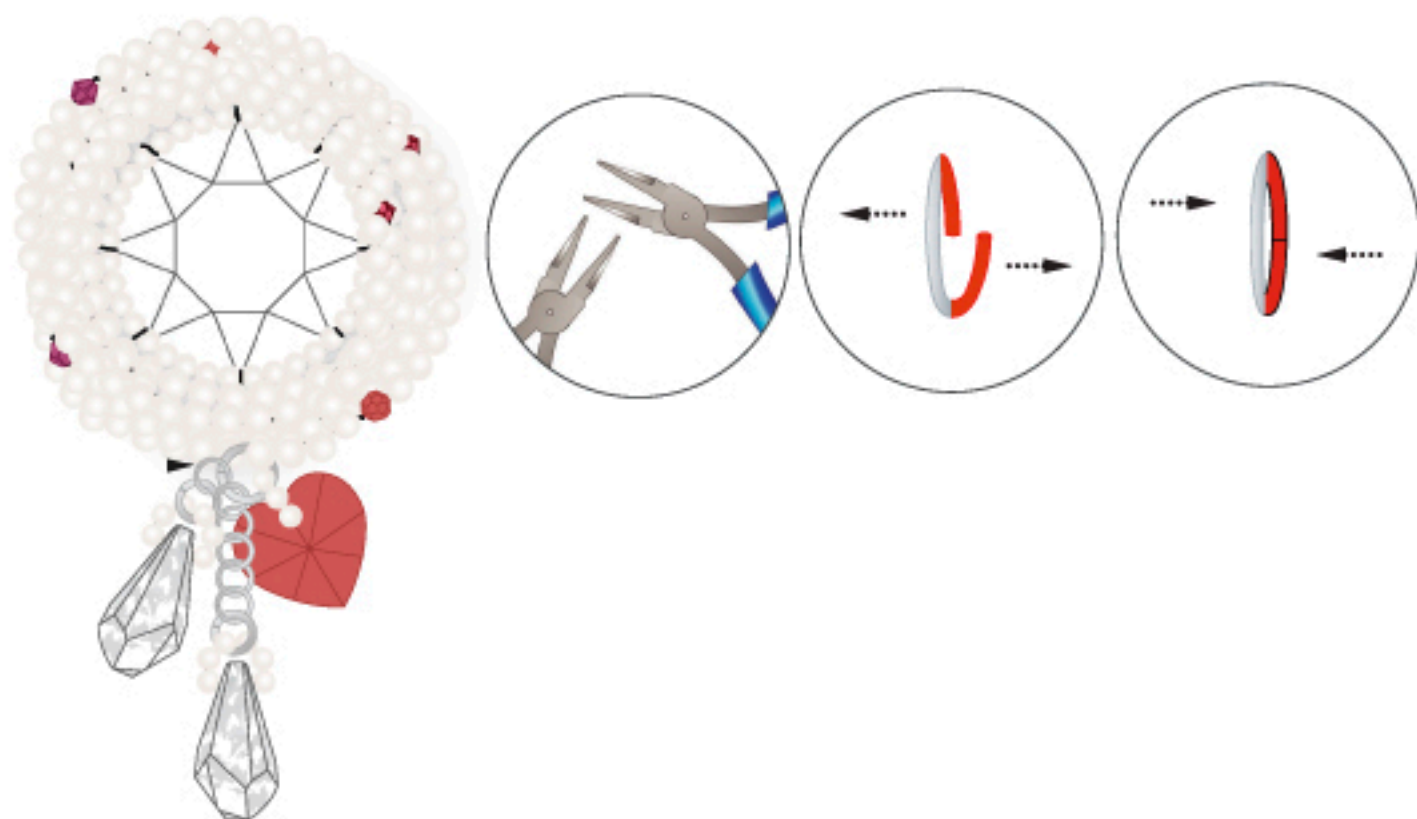


STEP 15

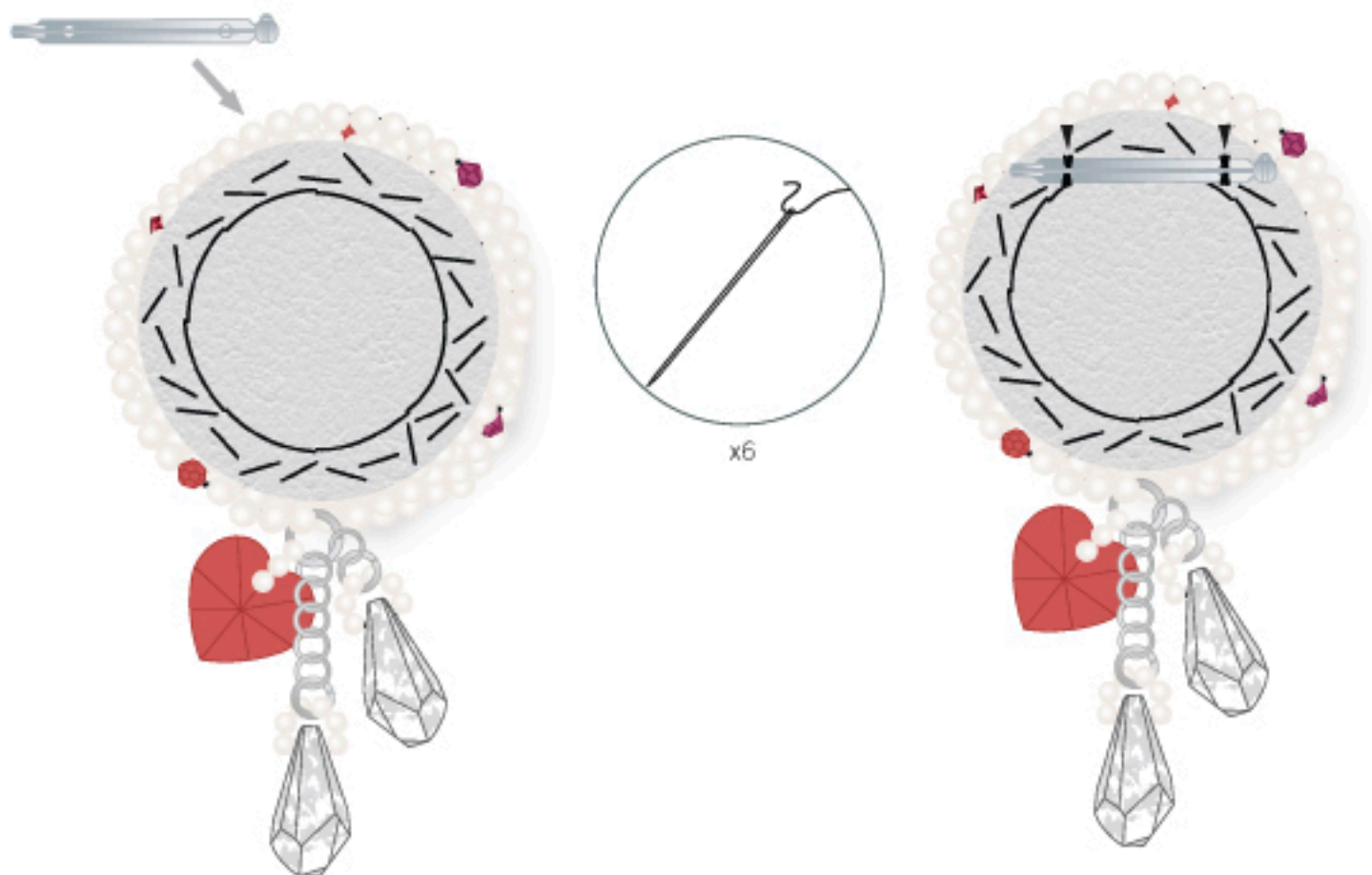
Repeat step 12 x1



STEP 16



STEP 17





- STEP 1: Cut 45 cm of the 0.30 mm nylon thread and string 39 Crystal Pearls in Crystal White Pearl, 4 mm and one CRYSTALLIZED™ Bead article 5328 Ruby.
- STEP 2: Tie a double knot, but be sure not to tie it too tight. Slide the ends of the nylon thread back through five pearls. Cut the ends of the nylon threads.
- STEP 3: Repeat step 1, but use a CRYSTALLIZED™ Bead article 5000 in Siam (instead of the CRYSTALLIZED™ Bead article 5328 Ruby) and slide the pearl string through the first pearl ring. Repeat step 2.
- STEP 4: Repeat step 1, but use a CRYSTALLIZED™ Bead article 5328 in Dark Red Coral and slide the pearl string through the first and the second pearl rings. Repeat step 2.
- STEP 5: Repeat steps 1 – 4 sliding the pearl strings through the pearl rings.
- STEP 6: Glue two pieces of leather together. Sketch the circle with indicated segments as you see in the illustration on the paper. Adhere double sided sticky tape to the back side of the paper circle and attach it on the leather.
- STEP 7: Take a needle and pierce through the marked points. Cut the circle out with the scissors and remove paper circle.
- STEP 8: Cut 1.2 m from the 0.40 mm nylon thread and string on 36 Crystal Pearls in Crystal White Pearl, 3 mm. Make a double knot, so that you get a short (20 cm) and a long end of thread.
- STEP 9: Using the long end of the thread, attach the needle and sew the pearl ring onto the leather. Make only five loose stitches (see illustration for positioning and stitching). Keep a 4 mm distance between pearl ring and leather.
- STEP 10: Slide the CRYSTALLIZED™ Round Stone article 1201 between the pearl ring and the leather, and finish sewing the rest of the pearl ring on the leather. After the last stitch slide a toothpick between the pearl ring and the leather in order to keep them on level while tying the double knot. For securing the thread stitch four times up and down, best underneath the stone for lesser visibility. Cut off the excess thread and take the toothpick out.
- STEP 11: Place the multiple pearl ring onto the pearl ring that is sewn to the leather and sew it onto the leather base as well. Make a double knot and cut off the rest of the nylon thread.
- STEP 12: Cut a 30 cm piece of nylon thread. Slide it through the heart pendant and string on six 5810, 3mm pearls. Thread back through the pearls, form a loop and tie a knot. Cut off the rest of the nylon thread.
- STEP 13: Open an 8 mm jump ring, slide the pearl ring with the CRYSTALLIZED™ Heart Pendant onto it and hook it on the brooch. See illustration for positioning. Close the jump ring.
- STEP 14: Repeat step 12 but instead of the CRYSTALLIZED™ Heart Pendant use a CRYSTALLIZED™ Pendant article 6015. Open a 6 mm jump ring. Slide on the pearl ring with the Pendant article 6015. Open five 5 mm jump rings and make a chain attaching them to the 6 mm jump ring. Attach the last one in the 8 mm jump ring from the Heart Pendant before.
- STEP 15: Repeat step 12 but instead of the CRYSTALLIZED™ Heart Pendant use a CRYSTALLIZED™ Pendant article 6015. Open a 6mm jump ring and slide onto the pearl ring with the Pendant article 6015.