

CREATE
YOUR STYLE with
CRYSTALLIZED™
- Swarovski Elements







DESIGN PROJECT

GIFT BOX
“LOVE”



GIFT BOX "LOVE"

CRYSTALLIZED™ – Swarovski Elements

Article	Product Group	Article No.	Amount	Size	Colour	Colour Code
	Beads	5000	3 pcs.	3 mm	Siam	208
	Beads	5328	3 pcs.	3 mm	Dark Red Coral	396
	Crystal Pearls	5810	239 pcs.	3 mm	Crystal White Pearl	001 650
	Pendants	6110	1 pc.	40x18 mm	Crystal	001
	Pendants	6202	1 pc.	14.4x14 mm	Siam	208
	Pendants	6202	1 pc.	18x17.5 mm	Siam	208

Supplies & Tools

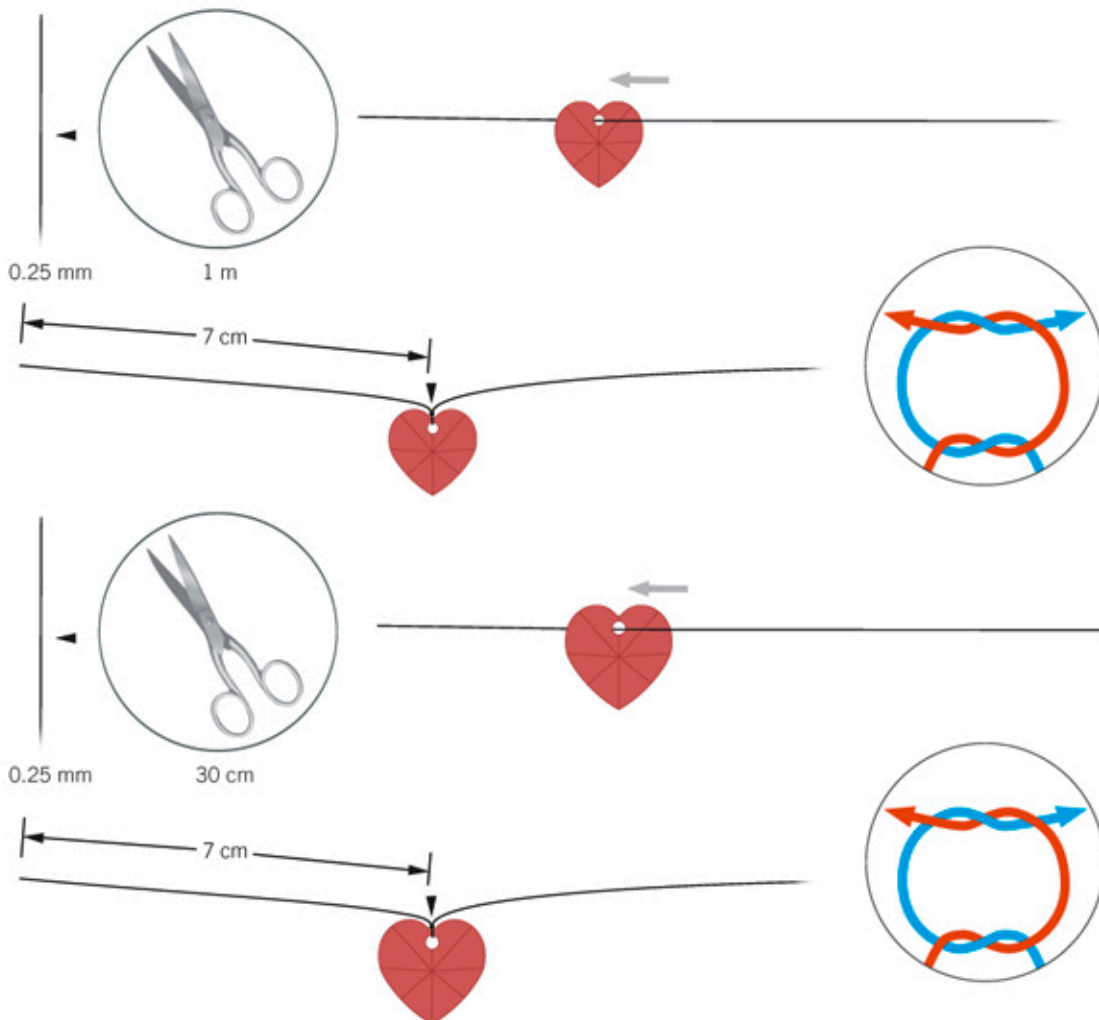
Supplies
 30 cm Double sided sticky tape, cream, 2.5 cm
 3 m Nylon thread, transparent, 0.25
 1 Paper box, cream, 17x17
 1.60 m Ribbon satin, cream, 2.5 cm

Tools
 Needle
 Pins
 Scissors

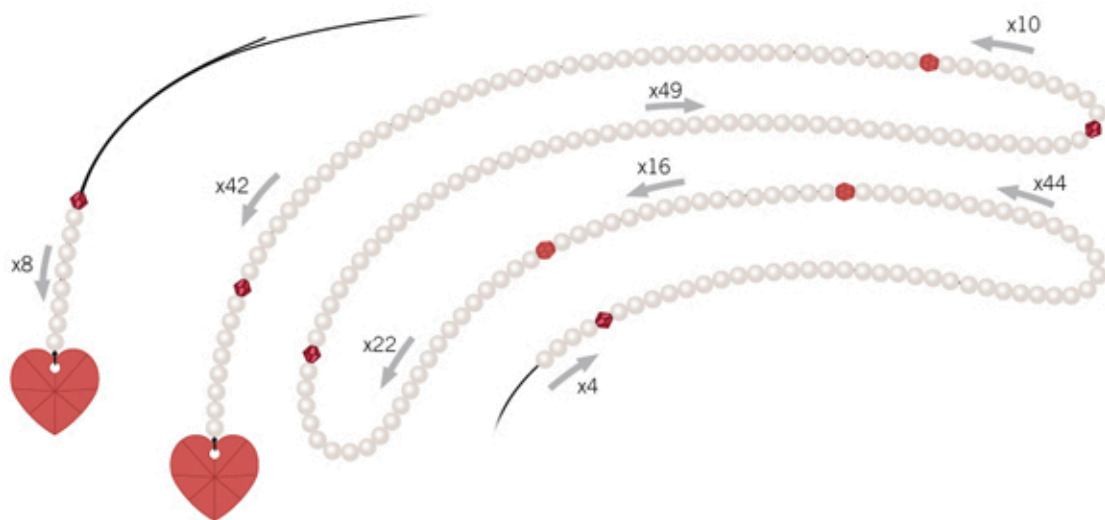
Level of design: BEGINNER

Have also a look at the **text instruction** at the last page!

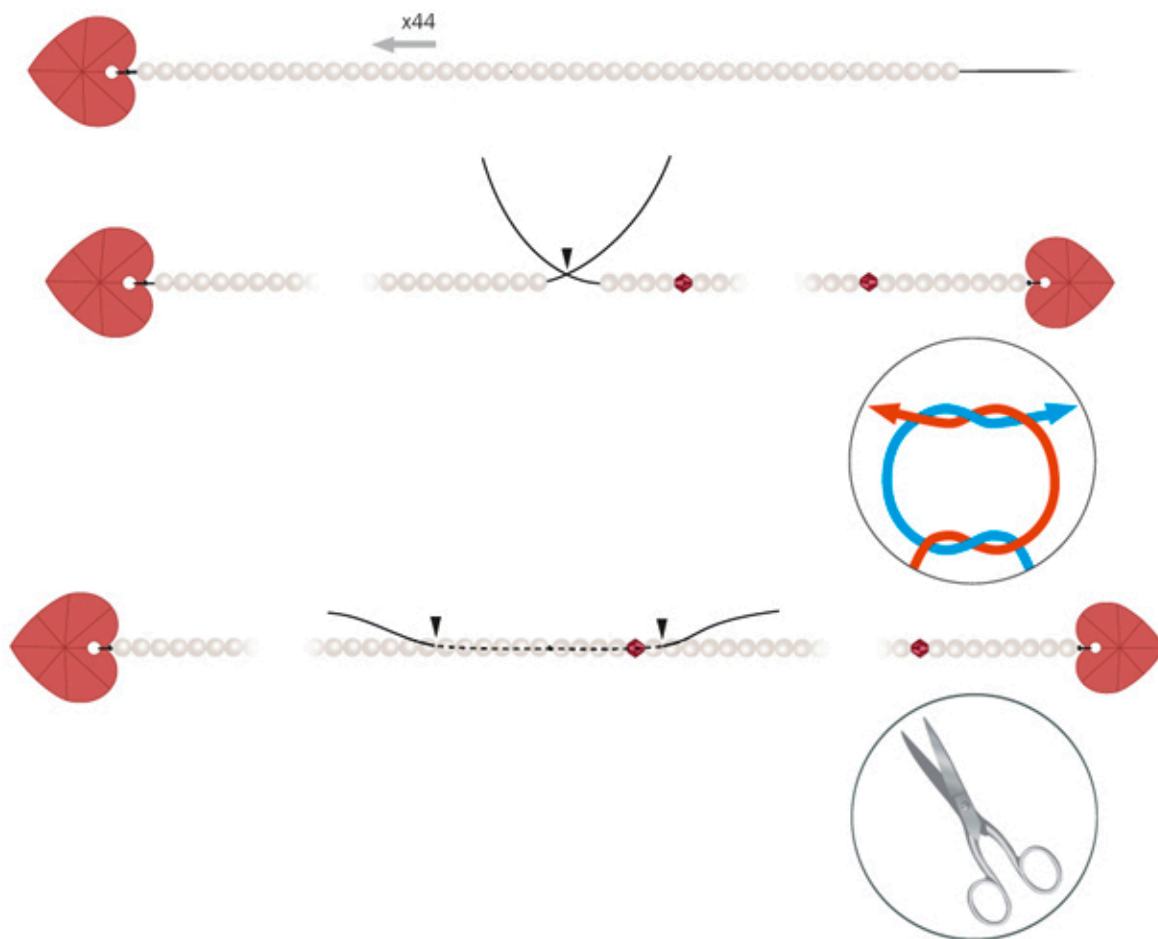
STEP 1



STEP 2



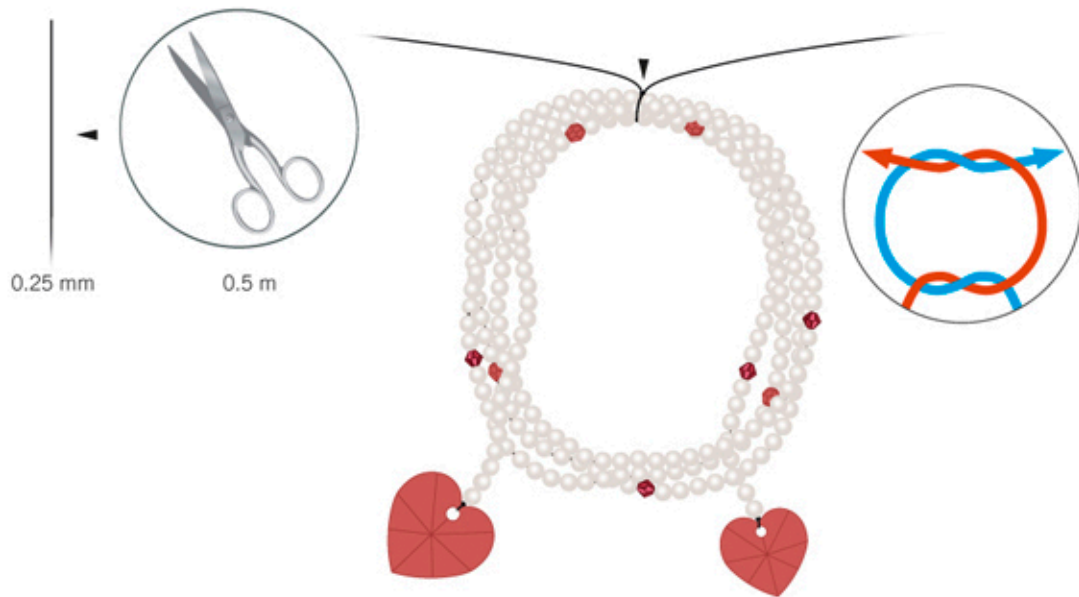
STEP 3



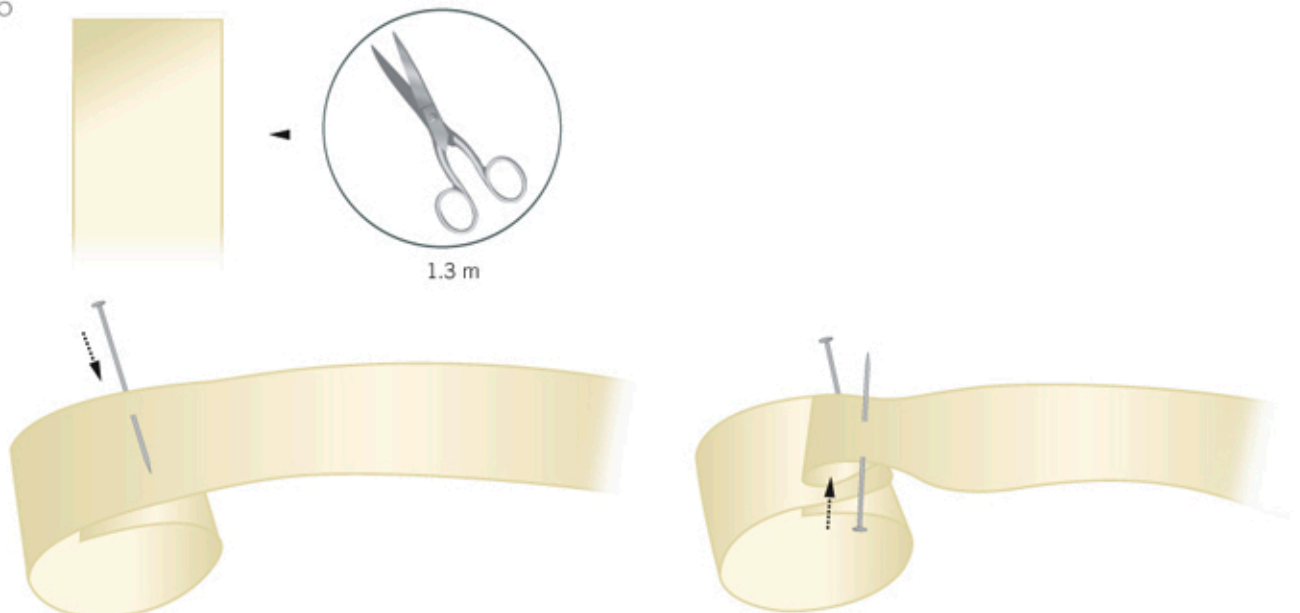
STEP 4



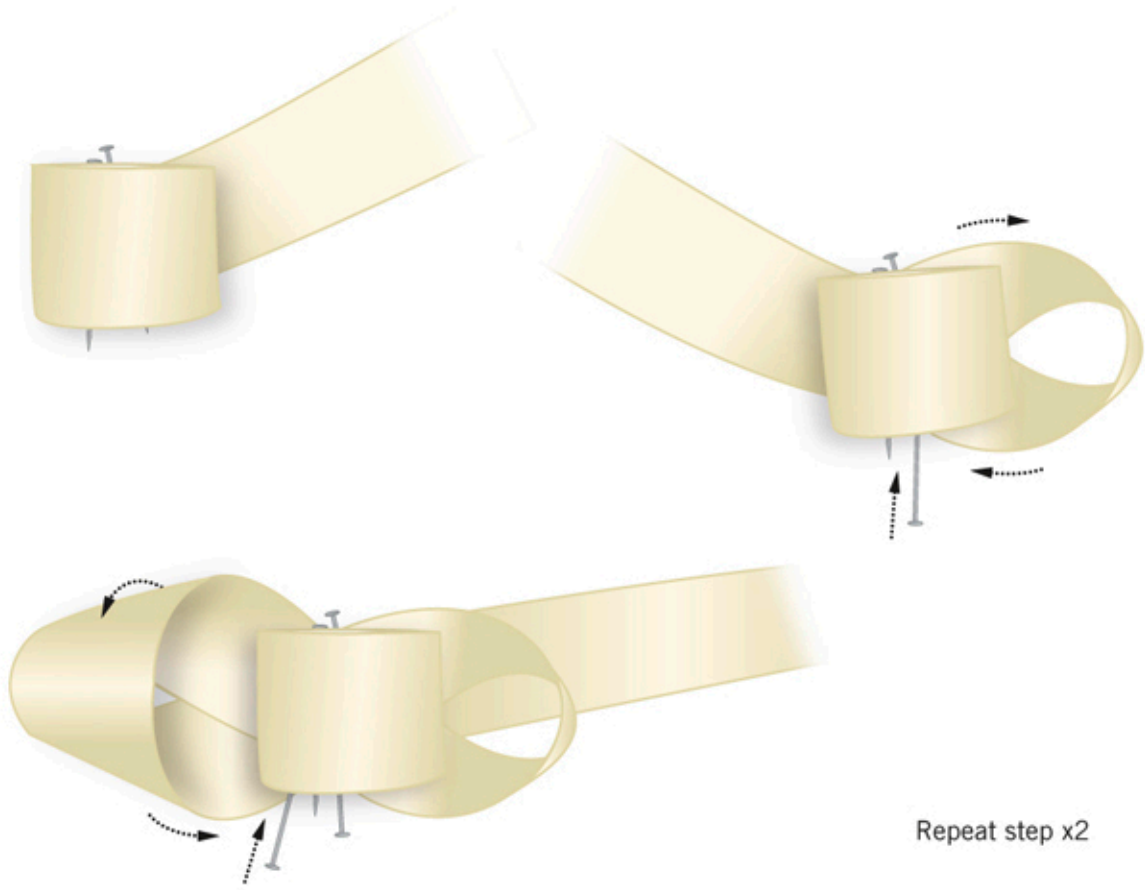
STEP 5



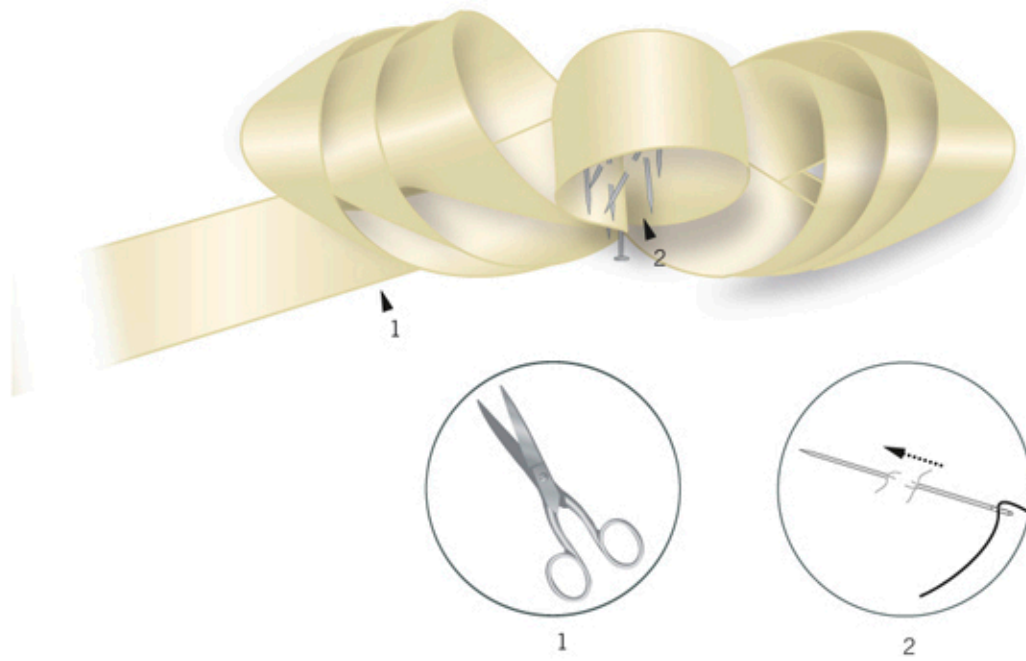
STEP 6

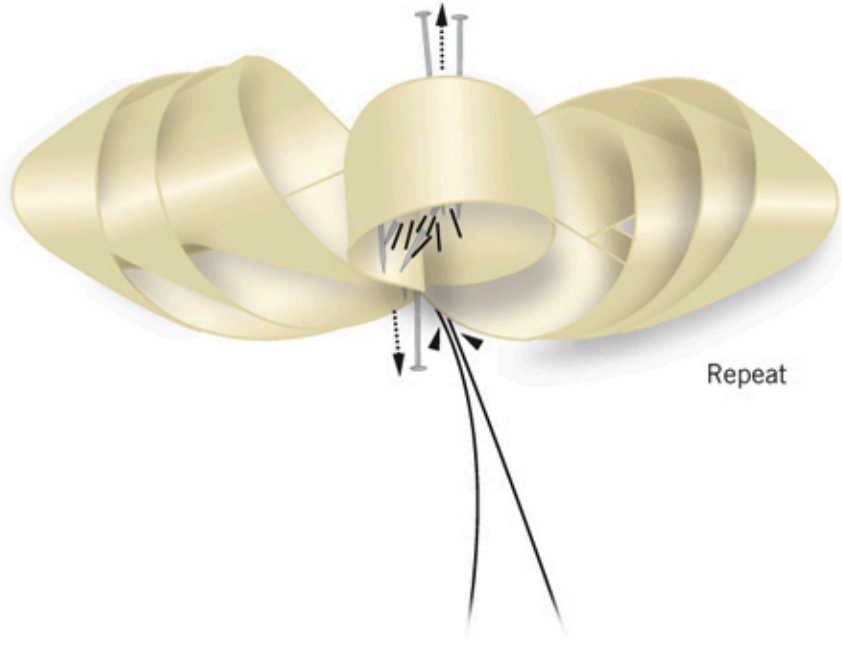


STEP 7

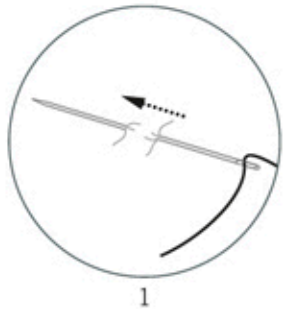


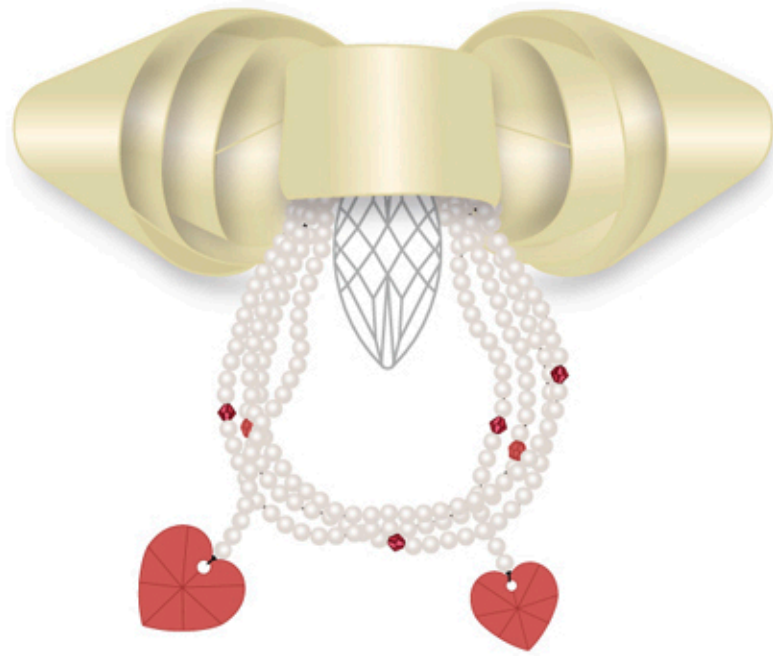
STEP 8



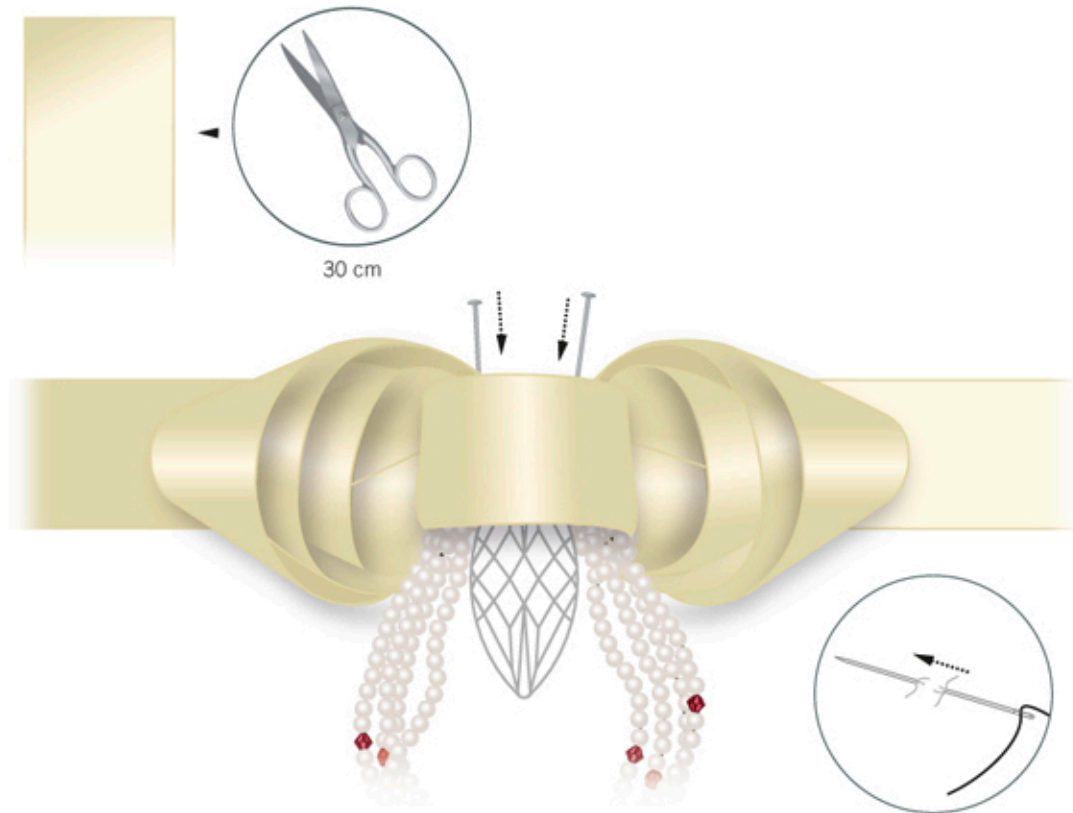


STEP 9





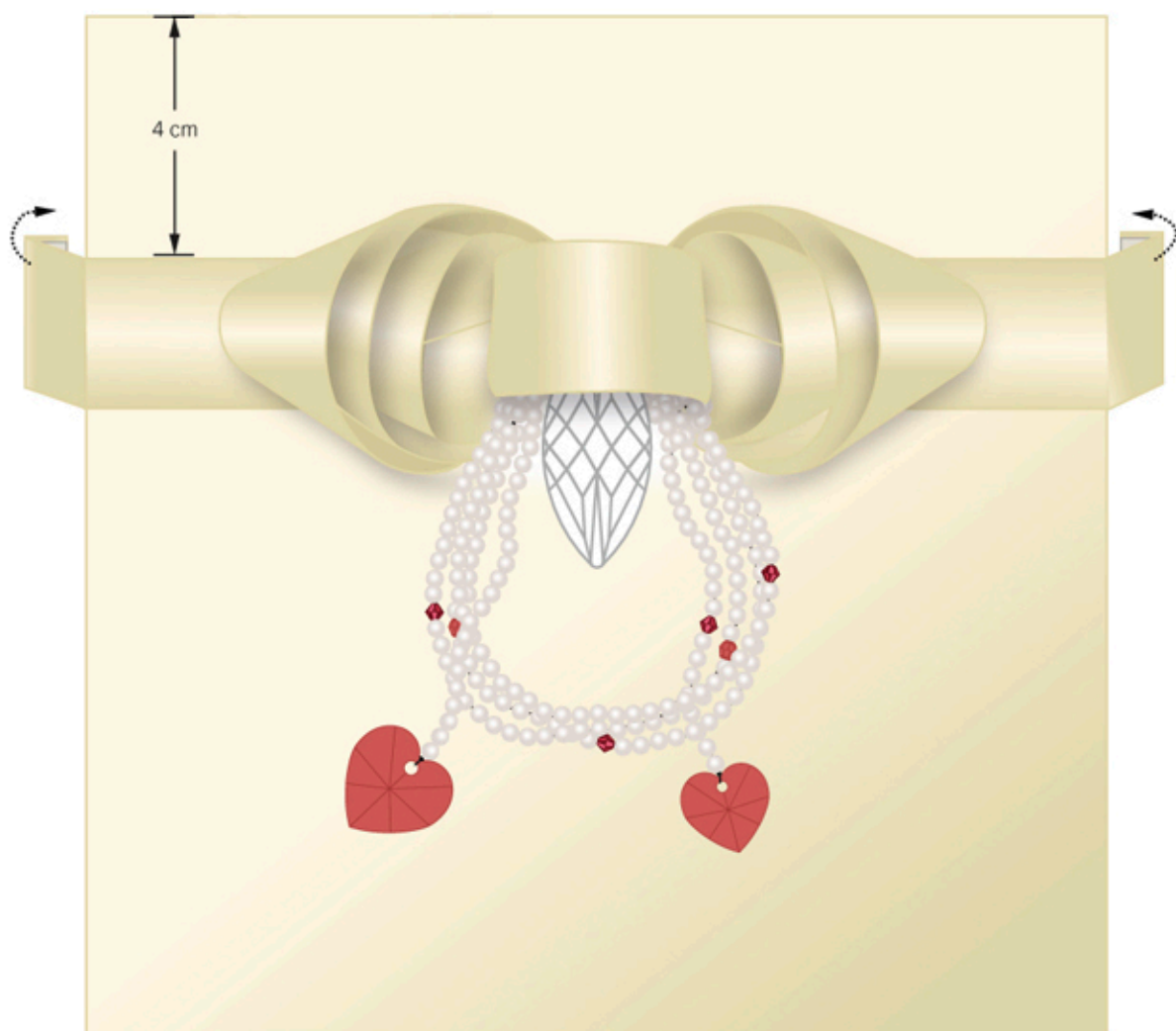
STEP 10

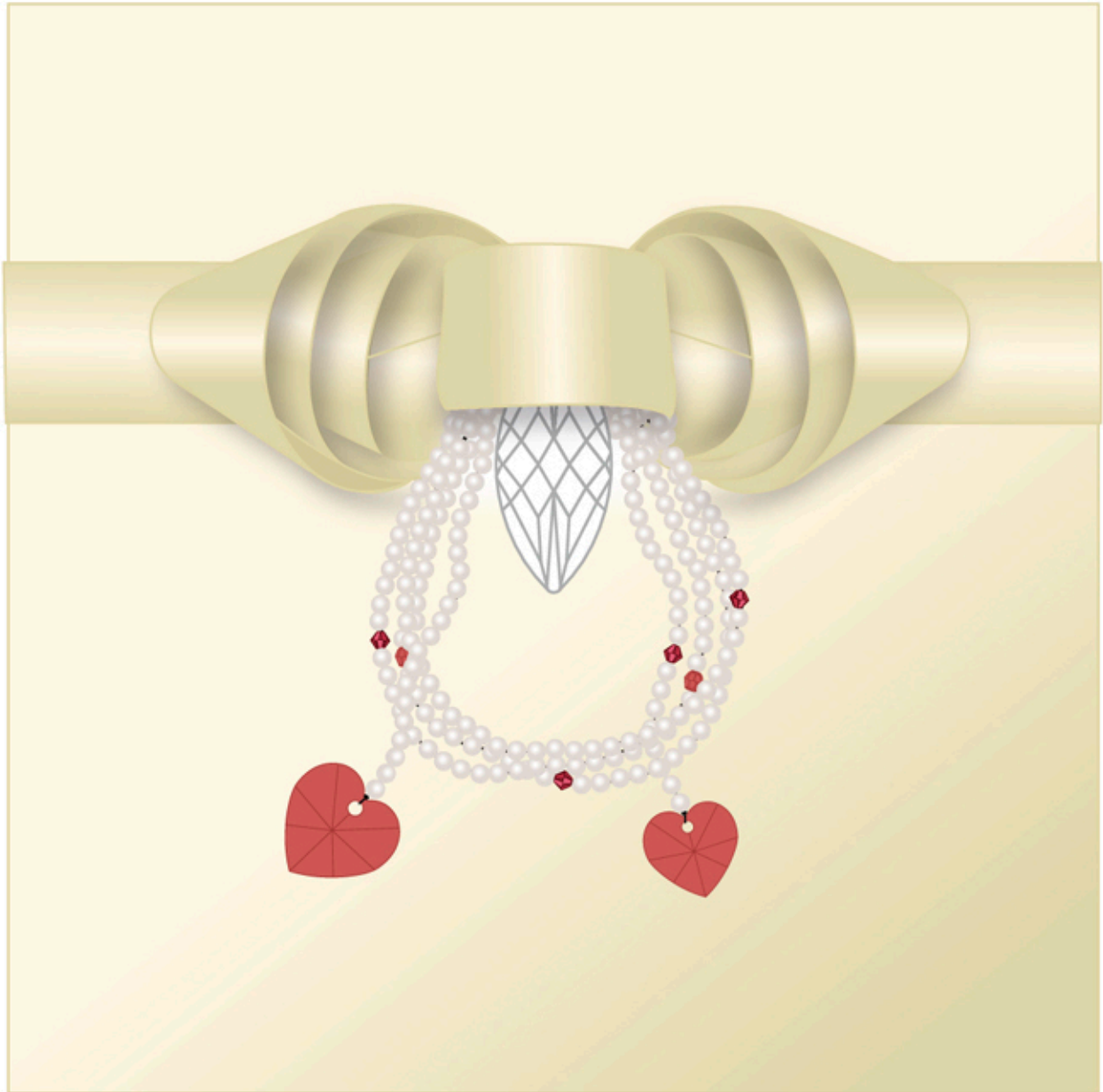


STEP 11



STEP 12





CREATE YOUR STYLE with CRYSTALLIZED™ – *Swarovski Elements* Design Project

Gift box “Love”

- STEP 1: Cut 1 m of the 0.25 mm nylon thread and slide on the CRYSTALLIZED™ Pendant article 6202, 14.4x14mm, Siam. Leave one end with just about 7 cm – then make a double knot with both thread ends. Cut 30 cm of the 0.25 mm nylon thread and slide on the CRYSTALLIZED™ Pendant article 6202, 18x17.5 mm, Siam. Leave one end with just about 7 cm – then make a double knot with both thread ends.
- STEP 2: Slide CRYSTALLIZED™ – *Swarovski Elements* onto both nylon thread ends of small heart as you see in illustration.
- STEP 3: Slide CRYSTALLIZED™ – *Swarovski Elements* onto both nylon thread ends of bigger heart as you see in illustration. Then knot nylon thread ends of small heart and big heart together as shown- thread the nylon back through some crystals and cut off excess.
- STEP 4: Form loops with the beaded string as you see in illustration.
- STEP 5: Cut 0.5 m of the 0.25 mm nylon thread and tie it around the loops as you see in illustration
- STEP 6: Cut 1.3 m of the satin ribbon and form a loop and secure with a pin. Form another small loop and secure it with a pin also.
- STEP 7: Form to the right side a loop as you see in illustration and secure it with a pin. Form another loop on the left side and secure it again with a pin. Repeat this step twice so that you have 3 loops on each side.
- STEP 8: Cut off the excess of satin ribbon as shown in illustration and sew the bow together in the middle. Remove the pins.
- STEP 9: Attach a CRYSTALLIZED™ Pendant article 6110 to the nylon threads with which you fixed the bead loops and go through the Pendant twice with both threads. Sew loops and Pendants onto inside of bow as you see in illustration. Cut off remaining threads.
- STEP 10: Cut 30 cm of satin ribbon and secure the bow in the middle with some pins. Then sew bow with a needle and a piece of nylon thread onto stripe of satin ribbon.
- STEP 11: Put some double sided sticky tape onto back side of strip of satin ribbon.
- STEP 12: Attach to the cover of your gift box.