

CREATE
YOUR STYLE
with SWAROVSKI ELEMENTS

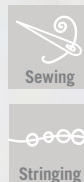


Valentines Day
Mother's Day
Your Special Day

DESIGN PROJECT

COLLAR
"LOVE"

COLLAR "LOVE"



SWAROVSKI ELEMENTS

	Product Group	Article No.	Amount	Size	Color	Color Code
	Beads	5742	4 pcs.	10 mm	Siam	208
	Crystal Pearls	5810	12 pcs.	3 mm	Crystal White Pearl	001 650
	Crystal Pearls	5810	216 pcs.	5 mm	Crystal White Pearl	001 650
	Pendants	6015/A	2 pcs.	21 mm	Mosaic White Opal	751
	Single Stone Settings	115004	3 pcs.	27x9 mm	Crystal	001
	Single Stone Settings	115004	5 pcs.	15x5 mm	Crystal	001
	Rondelles	177719	2 pcs.	19x5 mm	Crystal	001
	Rondelles	177808	5 pcs.	8 mm	Crystal	001

Supplies & Tools

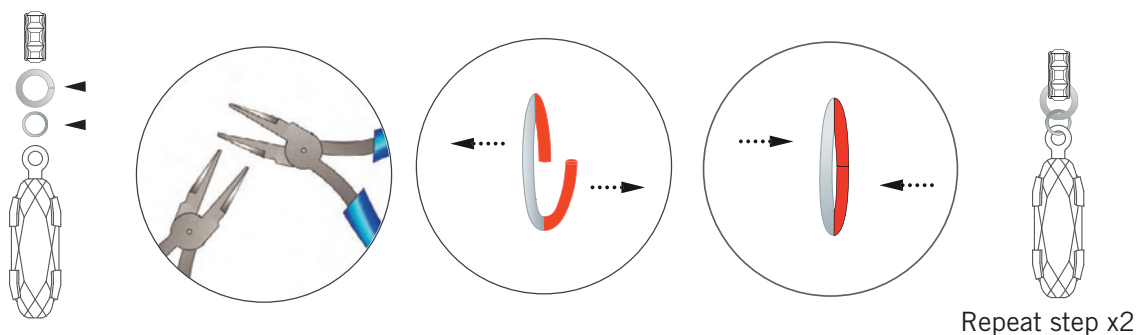
Supplies

4x Jump ring, Silver, Ø 5
 6x Jump ring, Silver, Ø 6
 3m Nylong thread, transparent, Ø 0.3
 1.2m Ribbon - satin, cream, Ø 1cm

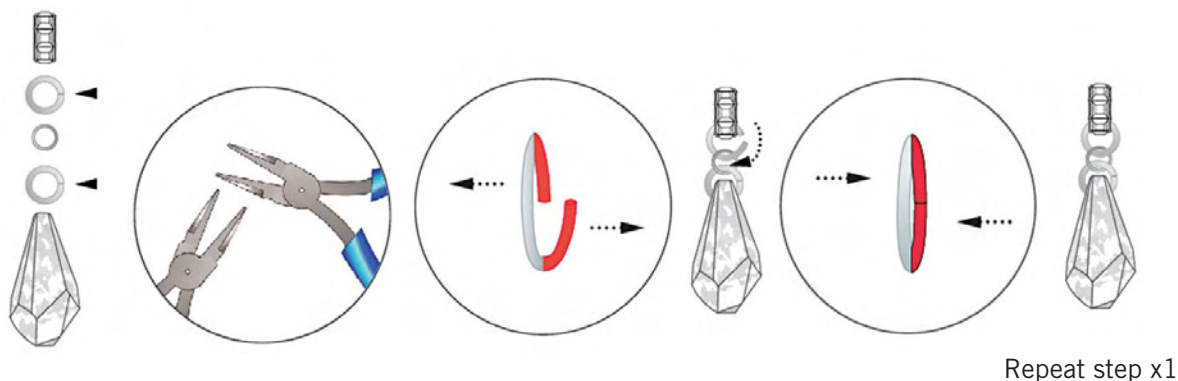
Tools

Scissors
 Sewing needle
 Tape

STEP 1: Open a 4mm & 6mm jump ring with flat nose pliers. Attach the 4 mm jump ring into the loop of the SWAROVSKI ELEMENTS Single Stone Setting, art.115004 in 27mm 1TC. Attach the 6mm jump ring into the 4mm jump ring and the SWAROVSKI ELEMENTS Rondelle, art. 1778080. Close the jump ring. Repeat this step twice to get 2 more settings on Rondelles.

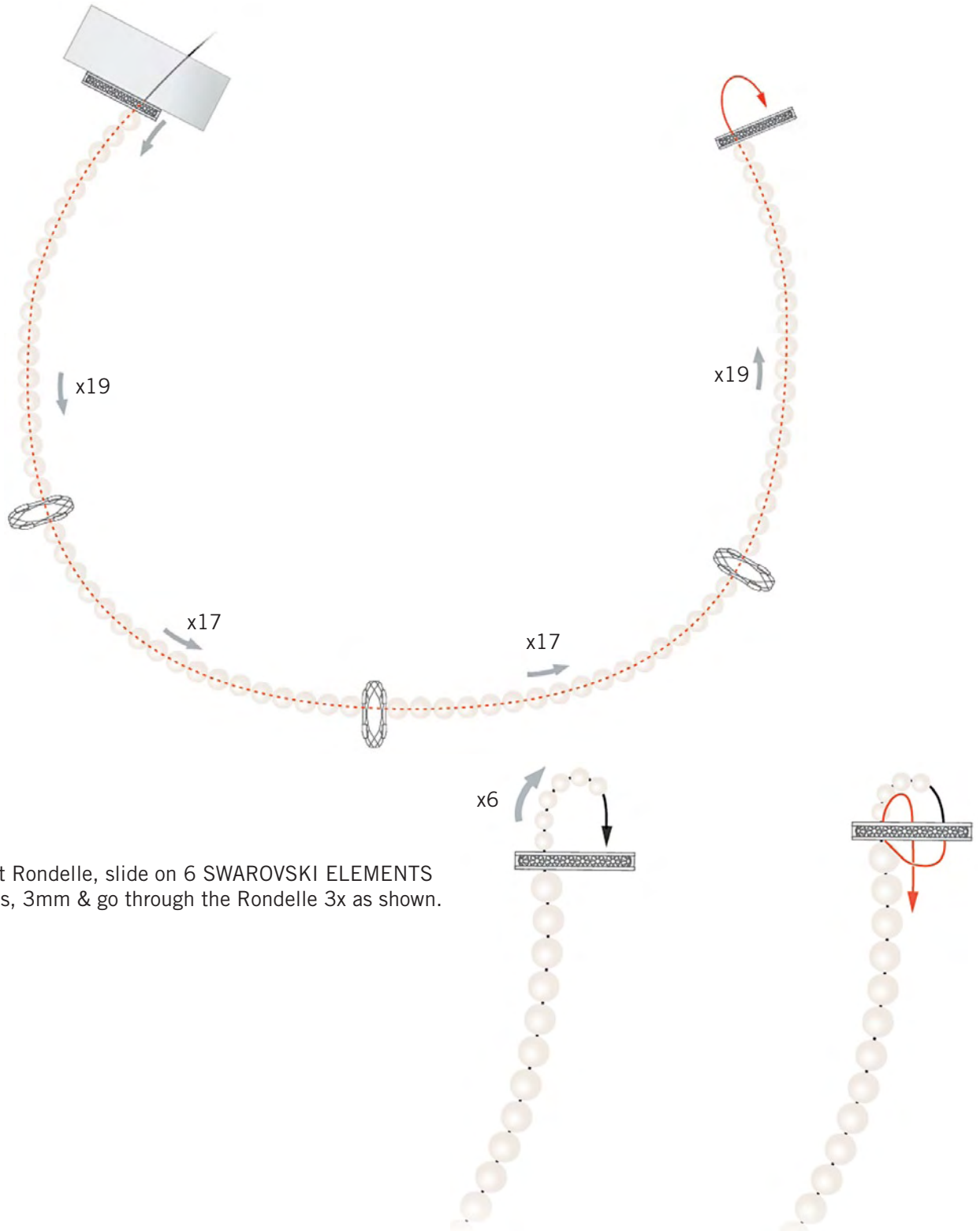
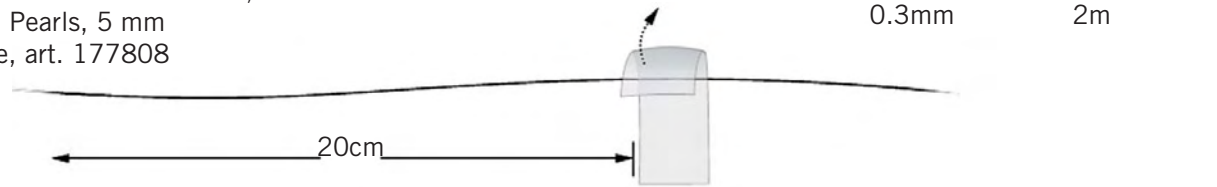


STEP 2: Open two 6mm jump rings with flat nose pliers. Attach one 6mm jump ring to a 4mm jump ring, the SWAROVSKI ELEMENTS Pendant, art. 6015/A and the 2nd 6mm jump ring. Attach the top 6 mm jump ring to the SWAROVSKI ELEMENTS Rondelle, art. 1778080: Close the jump rings. Repeat this step once to get one more SWAROVSKI ELEMENTS Pendant 6015 on a Rondelle.



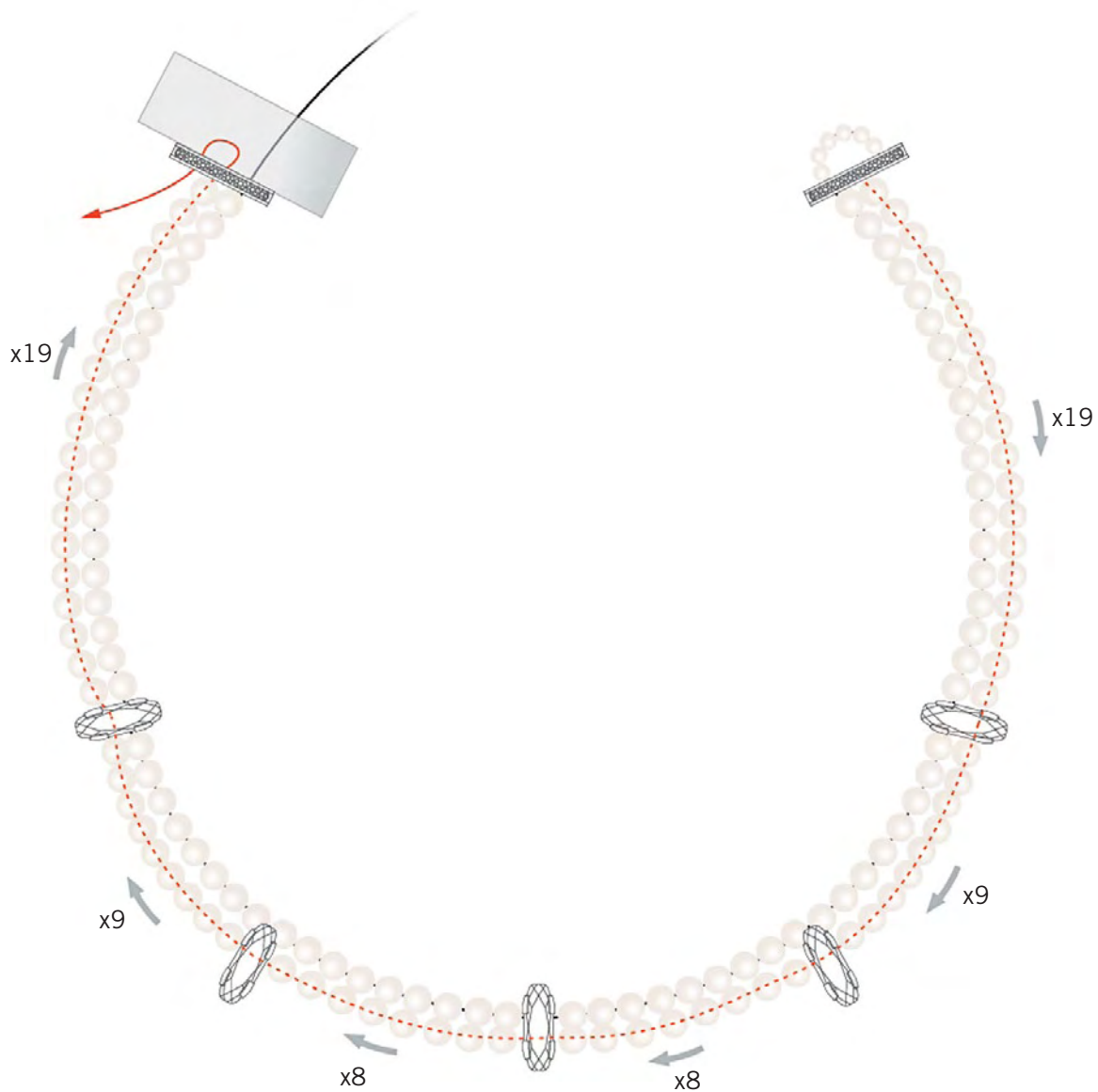
STEP 3: Cut 2m of the 0.3mm nylon thread and fix it with tape about 20cm from one end.
 From the un-taped side, slide on the following SWAROVSKI ELEMENTS articles:

- 1 x Rondelle, art. 177808,
- 19 x Crystal Pearl, 5 mm,
- 1 x Setting 115004 with 2 holes,
- 17 x Crystal Pearls 5 mm,
- 1 x Setting 115004 with 2 holes,
- 17 x Crystal Pearls 5 mm,
- 1 x Setting 115004 with 2 holes,
- 19 x Crystal Pearls, 5 mm
- 1 x Rondelle, art. 177808



STEP 4: After the last Rondelle, slide on 6 SWAROVSKI ELEMENTS Crystal Pearls, 3mm & go through the Rondelle 3x as shown.

STEP 5: Slide onto nylon thread 19 SWAROVSKI ELEMENTS Crystal Pearls 5mm,
 Go through Setting 115004 with 2 holes,
 Slide on: 9 x Crystal Pearls 5mm, 1 x Setting 115004 with 2 holes and 8 x Crystal Pearls 5mm,
 Go through Setting 115004 with 2 holes,
 Slide on: 8 x Crystal Pearls 5mm, 1 x Setting 115004 with 2 holes and 9 x Crystal Pearls 5mm,
 Go through Setting 115004 with 2 holes,
 Slide on 19 SWAROVSKI ELEMENTS Crystal Pearls, 5mm
 Go through the Rondelle with nylon thread as shown.



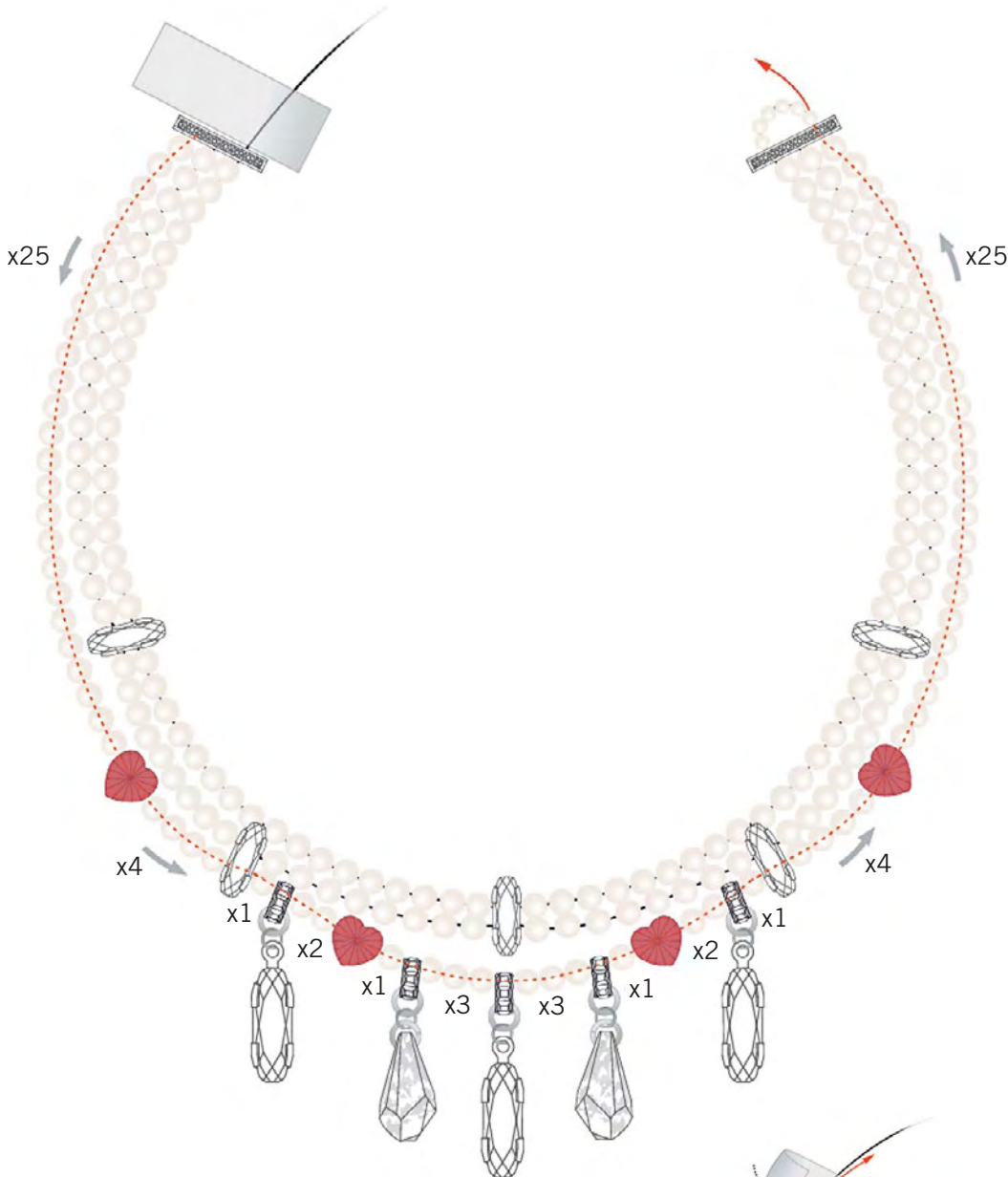
STEP 6: Slide onto nylon thread third row with SWAROVSKI ELEMENTS articles of collar:

25 x Crystal Pearls, 5mm
 1 x Swarovski Bead art. 5742
 4 x Crystal Pearls, 5mm
 Go through Setting 115004 with 2 holes
 1 x Crystal Pearl, 5mm
 1 x Setting on Rondelle
 2 x Crystal Pearls, 5mm
 1 x Bead art. 5742
 1 x Crystal Pearl, 5mm
 1 x SWAROVSKI ELEMENTS Pendant art. 6015 on Rondelle
 3 x Crystal Pearls, 5mm

1 x Setting on Rondelle
 3 x Crystal Pearls, 5mm
 1 x 6015 on Rondelle
 1 x Crystal Pearls, 5mm
 1 x Bead art. 5742
 2 x Crystal Pearls, 5mm
 1 x Setting on Rondelle
 1 x Crystal Pearls, 5mm
 Go through Setting 115004 with 2 holes
 4 x Crystal Pearls, 5mm
 1 x Bead art. 5742
 5 x Crystal Pearls, 5mm

Step 6 shown on next page »

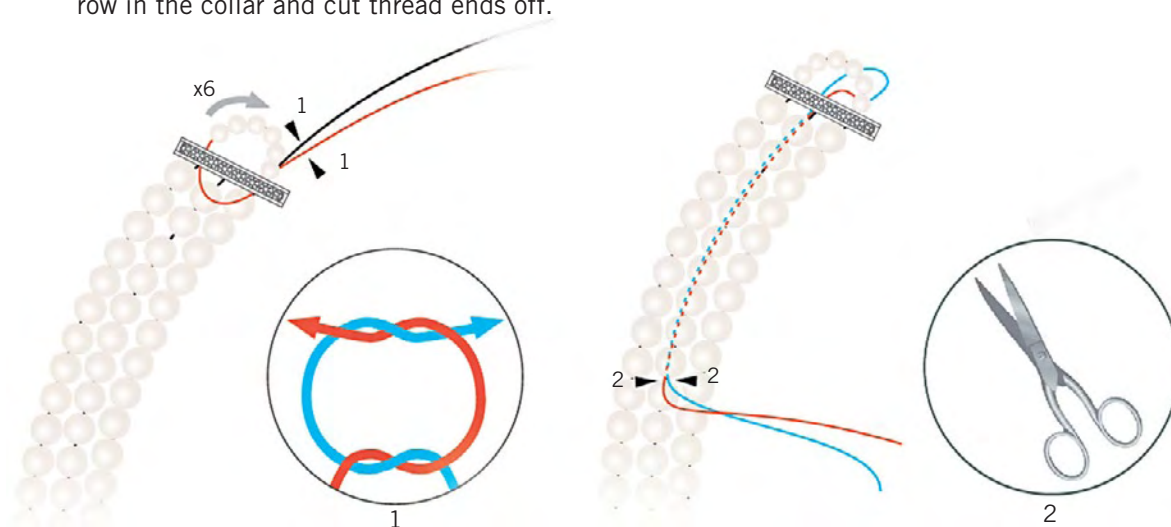
STEP 6 »



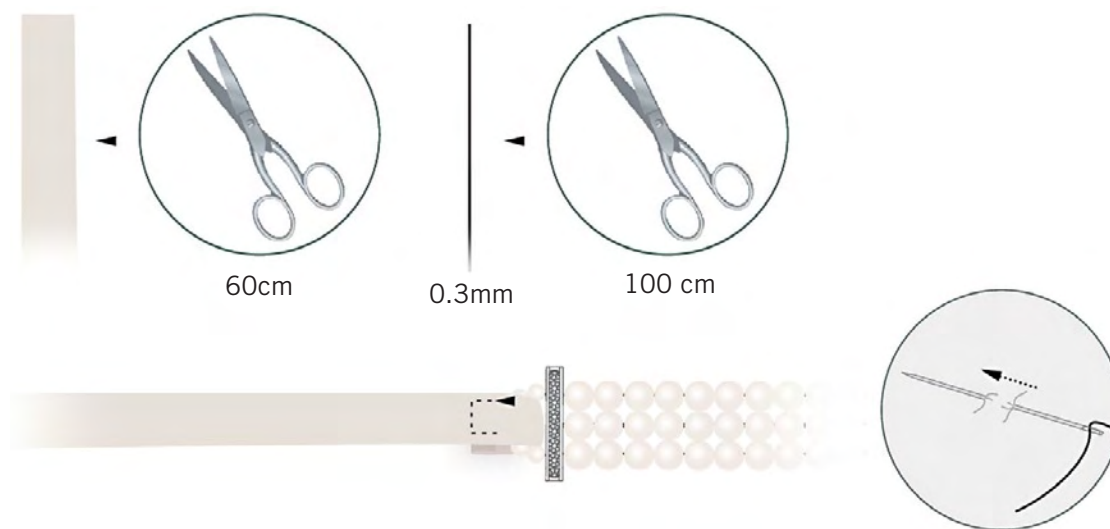
STEP 7: Slide thread end through pearl loop with small Crystal Pearls and through the entire 1st row of the collar then remove tape on other end (see illustration).



STEP 8: Slide onto nylon thread end 6 SWAROVSKI ELEMENTS Crystal Pearls, 3mm and go through Rondelle as shown. Make a double knot with both nylon thread ends and go back through some Crystal Pearls of the second Crystal Pearl row in the collar and cut thread ends off.



STEP 9: Cut 60cm of satin ribbon and 100cm of nylon thread. Take the satin ribbon and slide it into one small pearl loop as you see in the illustration. Attach the ribbon to the pearl loop with a needle and nylon thread as shown.



STEP 10: Repeat step 9 on second end of collar and tie a bow with satin ribbons.

